



## Ultrasonic sensor, receiver

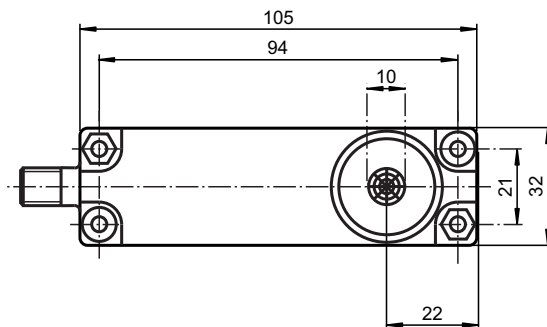
### UBE15M-F54-H2-V1

- Large sensing range
- Large possible lateral distance between emitter and receiver
- Separate evaluation

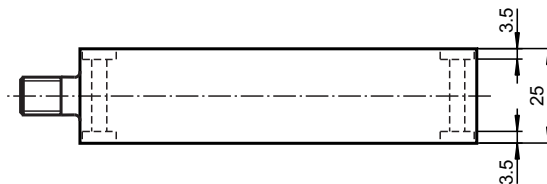
Multi-head system



## Dimensions



Bore hole and countersinking  
for screws/hexagon M4



## Technical Data

### General specifications

Sensing range	0 ... 15000 mm , emitter - receiver synchronised
Transducer frequency	approx. 40 kHz
Opening angle	$\pm 45^\circ$ at -6 dB
Temperature drift of echo propagation delay	0.2 %/K

### Electrical specifications

Operating voltage	$U_B$	10 ... 30 V DC , ripple 10 % <sub>SS</sub>
No-load supply current	$I_0$	$\leq 15$ mA (typ. 10 mA at $U_B = 24$ V DC)

### Output

Release date: 2024-08-28 Date of issue: 2024-08-28 Filename: 109086\_eng.pdf

Refer to "General Notes Relating to Pepperl+Fuchs Product Information".

Pepperl+Fuchs Group  
www.pepperl-fuchs.com

USA: +1 330 486 0001  
fa-info@us.pepperl-fuchs.com

Germany: +49 621 776 1111  
fa-info@de.pepperl-fuchs.com

Singapore: +65 6779 9091  
fa-info@sg.pepperl-fuchs.com

**PEPPERL+FUCHS**

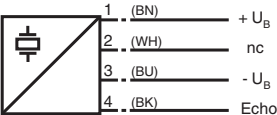
Technical Data

Output type		1 pulse output for echo run time, open collector NPN, short-circuit proof 0 level (active): $U_{OL} \leq 2 \text{ V}$ , $I_{OL} \leq 15 \text{ mA}$ 1 level (inactive): $U_{OH} = U_B$ (pull-up $R = 330 \text{ k}\Omega$ )
Compliance with standards and directives		
Standard conformity		
Standards		EN IEC 60947-5-2:2020 IEC 60947-5-2:2019
Approvals and certificates		
UL approval		cULus Listed, Class 2 Power Source
CCC approval		CCC approval / marking not required for products rated $\leq 36 \text{ V}$
Ambient conditions		
Ambient temperature		0 ... 50 °C (32 ... 122 °F)
Storage temperature		-40 ... 85 °C (-40 ... 185 °F)
Mechanical specifications		
Connection type		Connector plug M12 x 1 , 4-pin
Degree of protection		IP30
Material		
Housing		PBT
Mass		110 g
Dimensions		
Height		31 mm
Width		105 mm
Length		25 mm

Connection

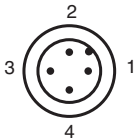
Standard symbol/Connection:

Receiver



Core colours in accordance with EN 60947-5-2.

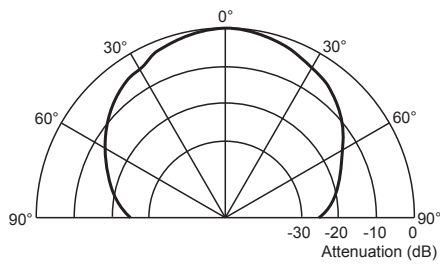
Connection Assignment



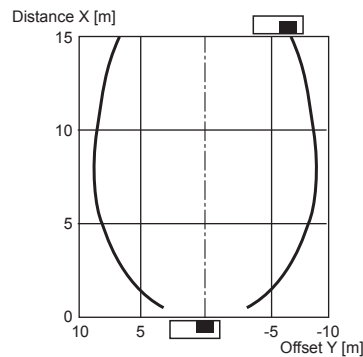
Release date: 2024-08-28 Date of issue: 2024-08-28 Filename: 109086\_eng.pdf

Characteristic Curve

Direction characteristics

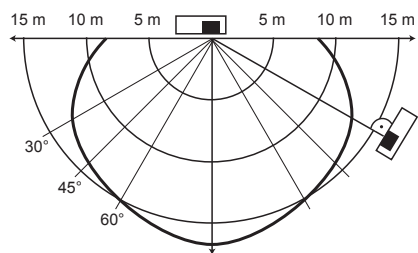


Characteristic response curve



Permissible distance (offset) between the optical axis of the emitter and receiver.

Characteristic response curve



Release date: 2024-08-28 Date of issue: 2024-08-28 Filename: 109086\_eng.pdf

## Function

### Function

The receiver is part of a complete system consisting of receiver, emitter, and controller

Transmitter     UBE15M-F54-H1-V1

Controller:     UH3-16E4A-K15-R3

In real mode, the transmitter and receiver will not be aligned to each other. This reduces the detection range that can be achieved.

The characteristic response curve to the side illustrates examples of the detection range of the system under the following operating conditions.

- The transmitter and receiver are arranged so they lie parallel opposite each other. The graph shows the detection range as a function of lateral offset.
- The receiver is arranged vertically downward, while the emitter is arranged in the direction of the receiver. The graph shows the detection range as a function of the angle of incidence.

This makes it possible to evaluate the detection range of the system as a function of the positioning of the transmitter and receiver for conditions that will occur in practical usage.



***Cable sockets with built-in indicator LEDs must not be used to connect this device!***